

# MV-CA017-10GM/GC

1.7 MP 1.1" CMOS GigE Area Scan Camera



GEN*i*CAM

GigE  
VISION

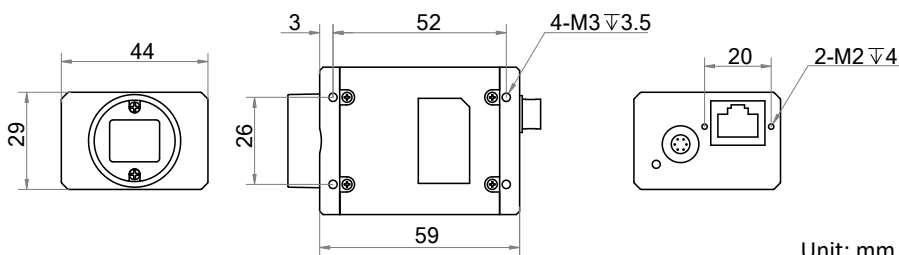
## Introduction

MV-CA017-10GM/GC camera adopts Sony® IMX432 sensor to provide high-quality image. It uses GigE interface to transmit non-compressed images in real time, and its max. frame rate can reach 68.5 fps in full resolution.

## Key Feature

- Supports auto or manual adjustment for gain, exposure time, LUT, Gamma correction, white balance, etc.
- Supports 2D noise reduction function.
- Supports high sensitivity mode and high full well mode.
- Adopts GigE interface and max. transmission distance of 100 meters without relay.
- Compatible with GigE Vision V2.0 Protocol, GenICam Standard, and third-party software based on the protocol and standard.

## Dimension



Unit: mm

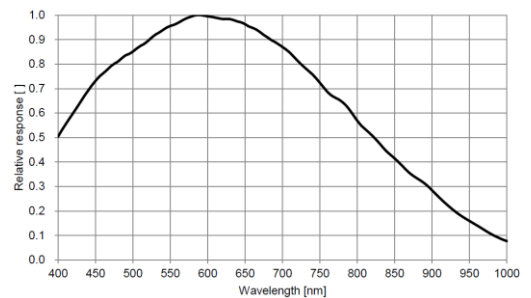
## Available Model

- Mono camera: MV-CA017-10GM
- Color camera: MV-CA017-10GC

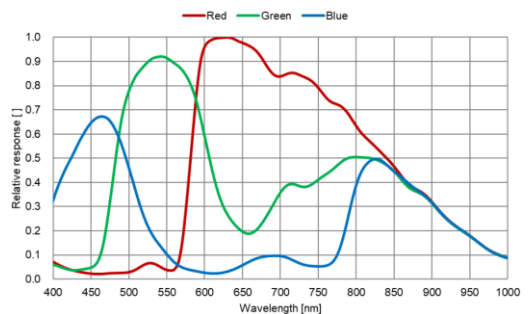
## Applicable Industry

Photovoltaic testing, image measuring, PCB manufacturing, etc.

## Sensor Quantum Efficiency



MV-CA017-10GM



MV-CA017-10GC

## Specification

Model	MV-CA017-10GM	MV-CA017-10GC
<b>Camera</b>		
Sensor type	CMOS, global shutter	
Sensor model	Sony® IMX432	
Pixel size	9 μm × 9 μm	
Sensor size	1.1"	
Resolution	1608 × 1104	
Max. frame rate	68.5 fps @1608 × 1104	
Dynamic range	72.44 dB	
SNR	40 dB	
Gain	0 dB to 24 dB	
Exposure time	UltraShort exposure mode: 1 μs to 5 μs	
	Standard exposure mode: 6 μs to 10 sec	
Exposure mode	Off/Once/Continuous exposure mode	
Mono/color	Mono	Color
Pixel format	Mono 8/10/10p/12/12p	Mono 8/10/12, Bayer RG 8/10/10p/12/12p, YUV422Packed, YUV422_YUYV_Packed, RGB 8, BGR 8
Binning	Supports 1 × 1, 1 × 2, 1 × 4, 2 × 1, 2 × 2, 2 × 4, 4 × 1, 4 × 2, 4 × 4	
Decimation	Supports 1 × 1, 1 × 2, 1 × 4, 2 × 1, 2 × 2, 2 × 4, 4 × 1, 4 × 2, 4 × 4	
Reverse image	Supports horizontal and vertical reverse image output	
<b>Electrical feature</b>		
Data interface	Gigabit Ethernet, compatible with Fast Ethernet	
Digital I/O	6-pin Hirose connector provides power and I/O, including opto-isolated input × 1 (Line 0), opto-isolated output × 1 (Line 1), bi-directional non-isolated I/O × 1 (Line 2).	
Power supply	12 VDC, supports PoE	
Power consumption	Typ. 4.2 W@12 VDC	Typ. 4.8 W@12 VDC
<b>Mechanical</b>		
Lens mount	C-Mount	
Dimension	29 mm × 44 mm × 59 mm (1.1" × 1.7" × 2.3")	
Weight	Approx. 100 g (0.22 lb.)	
Ingress protection	IP30 (under proper lens installation and wiring)	
Temperature	Working temperature: 0 °C to 50 °C (32 °F to 122 °F)	
	Storage temperature: -30 °C to 70 °C (-22 °F to 158 °F)	
Humidity	20% to 95% RH, non-condensing	
<b>General</b>		
Client software	MVS or third-party software meeting with GigE Vision Protocol	
Operating system	32/64-bit Windows XP/7/10, 32/64-bit Linux and 64-bit MacOS	
Compatibility	GigE Vision V2.0, GenICam	
Certification	CE, FCC, RoHS, KC	