

# MV-CH050-11CM

5 MP 2/3" CMOS Camera Link Area Scan Camera



GEN*i*CAM



## Introduction

MV-CH050-11CM camera adopts Sony® IMX264 sensor to provide high-quality image. It uses Camera Link interface to transmit non-compressed images in real time, and its max. frame rate can reach 35.7 fps in full resolution.

## Key Feature

- Adopts global shutter CMOS sensor providing wide dynamic range and high-quality image.
- Supports configuration modes of Base and Medium via the Camera Link interface.
- Adopts compact design with mounting holes for flexible mounting.
- Compatible with Camera Link V2.0 Protocol, GenICam Standard, and the third-party software based on the protocol and standard.

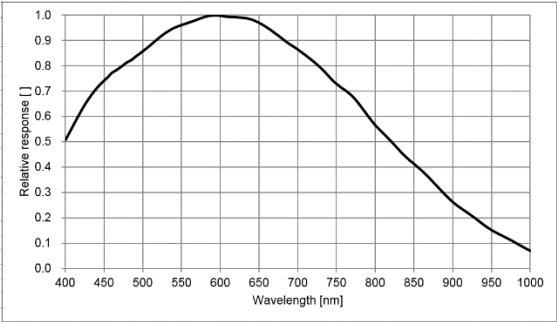
## Available Model

MV-CH050-11CM

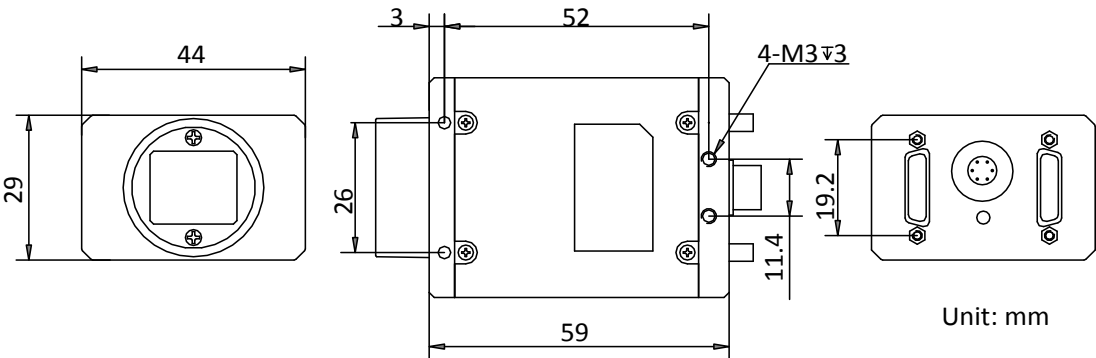
## Applicable Industry

SMT/ PCB AOI, FPD, 3D SPI, high-accuracy measurement, etc.

## Sensor Quantum Efficiency



## Dimension



# Specification

<b>Model</b>	<b>MV-CH050-11CM</b>	
<b>Camera</b>		
<b>Sensor type</b>	CMOS, global shutter	
<b>Sensor model</b>	Sony® IMX264	
<b>Pixel size</b>	3.45 μm × 3.45 μm	
<b>Sensor size</b>	2/3"	
<b>Resolution</b>	2448 × 2048	
<b>Configuration mode</b>	Base	Medium
<b>Tap geometry</b>	1X2_1Y	1X4_1Y
<b>Tap number</b>	2 Taps	4 Taps
<b>Max. frame rate</b>	19.4 fps @2448 × 2048	35.7 fps @2448 × 2048
<b>Pixel clock</b>	40 MHz, 66 MHz, 85 MHz	
<b>Dynamic range</b>	72 dB	
<b>SNR</b>	40.2 dB	
<b>Gain</b>	0 dB to 24 dB	
<b>Exposure time</b>	UltraShort exposure mode: 1 μs to 14 μs Standard exposure mode: 15 μs to 10 s	
<b>Mono/color</b>	Mono	
<b>Pixel format</b>	Mono 8/10/12	
<b>Exposure mode</b>	Off/Once/Continuous exposure mode	
<b>Binning</b>	Supports 1 × 1, 1 × 2, 1 × 4, 2 × 1, 2 × 2, 2 × 4, 4 × 1, 4 × 2, 4 × 4	
<b>Decimation</b>	Not support	
<b>Reverse image</b>	Supports horizontal and vertical reverse image output	
<b>Electrical features</b>		
<b>Data interface</b>	Camera Link with SDR interface	
<b>Digital I/O</b>	6-pin Hirose connector provides power and I/O, including opto-isolated input × 1 (Line 0), opto-isolated output × 1 (Line 1), bi-directional non-isolated I/O × 1 (Line 2).	
<b>Power supply</b>	9 VDC to 24 VDC	
<b>Power consumption</b>	Typ. 2.64 W@12 VDC	
<b>Structure</b>		
<b>Lens mount</b>	C-mount	
<b>Dimension</b>	44 mm × 29 mm × 59 mm (1.7" × 1.1" × 2.3")	
<b>Weight</b>	Approx. 100 g (0.2 lb.)	
<b>Ingress protection</b>	IP30 (under proper lens installation and wiring)	
<b>Temperature</b>	Working temperature: 0 °C to 50 °C (32 °F to 122 °F) Storage temperature: -30 °C to 70 °C (-22 °F to 158 °F)	
<b>Humidity</b>	20% to 80% RH, non-condensing	
<b>General</b>		
<b>Client software</b>	MVS or frame grabber software meeting with GenICam Protocol	
<b>Operating system</b>	32/64-bit Windows XP/7/10	
<b>Compatibility</b>	Camera Link V2.0, GenICam	
<b>Certification</b>	CE, FCC, RoHS, KC	