

# MVGL-AC072-313GGM

0.4 MP 1/2.9" CMOS GigE Area Scan Camera



GEN*i*CAM

GIG*E*  
VISION

## Introduction

MVGL-AC072-313GGM adopts Sony® IMX 287 sensor and GigE interface to provide high-quality image and non-compressed images in real time. Its max. frame rate reaches up to 312.9 fps in full resolution.

## Key Feature

- Adopts GigE interface and max. transmission distance of 100 meters without relay.
- Supports auto and manual adjustment for exposure control, LUT, Gamma correction, etc.
- Up to 128 MB local memory for burst transmission.
- Supports hardware trigger, software trigger, etc.
- Compatible with GigE Vision V2.0 Protocol, GenICam Standard, and third-party software based on the protocol and standard.

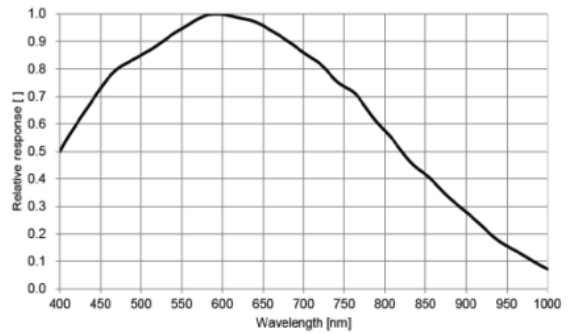
## Available Model

MVGL-AC072-313GGM

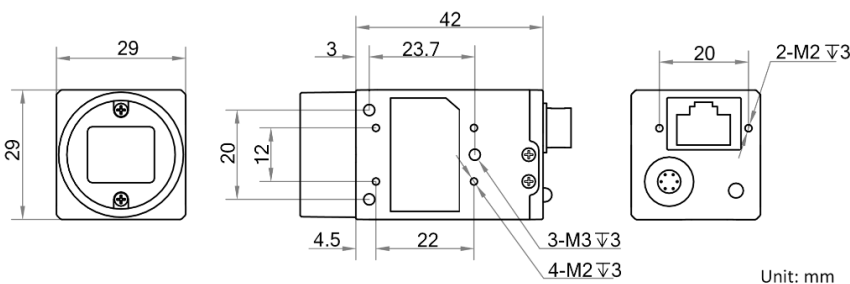
## Applicable Industry

Electronic semiconductor, factory automation, food and beverage, medical packaging, etc.

## Sensor Quantum Efficiency



## Dimension



## Specification

<b>Model</b>	<b>MVGL-AC072-313GGM</b>
<b>Camera</b>	
<b>Sensor type</b>	Global shutter CMOS
<b>Sensor model</b>	Sony® IMX287
<b>Pixel size</b>	6.9 μm × 6.9 μm
<b>Sensor size</b>	1/2.9"
<b>Resolution</b>	720 × 540
<b>Max. frame rate</b>	312.9 fps @720 × 540
<b>Dynamic range</b>	74 dB
<b>SNR</b>	41 dB
<b>Gain</b>	0 dB to 20 dB
<b>Exposure time</b>	1 μs to 10 s
<b>Shutter mode</b>	Off/ Once/ Continuous exposure mode
<b>Mono/color</b>	Mono
<b>Pixel format</b>	Mono 8/10/10p/12/12p
<b>Binning</b>	Not support
<b>Decimation</b>	Not support
<b>Reverse image</b>	Supports horizontal and vertical reverse image
<b>Image buffer</b>	128 MB
<b>Electrical features</b>	
<b>Data interface</b>	Gigabit Ethernet interface
<b>Digital I/O</b>	6-pin Hirose connector provides power supply and I/O, including opto-isolated Input x 1 (Line 0), opto-isolated Output x 1 (Line 1), and bi-directional non-isolated I/O x 1 (Line 2).
<b>Power supply</b>	9 VDC to 24 VDC, supports PoE
<b>Power</b>	Approx. 3.1 W@12 VDC
<b>Structure</b>	
<b>Lens mount</b>	C-Mount
<b>Dimension</b>	29 mm × 29 mm × 42 mm (1.1" × 1.1" × 1.7")
<b>Weight</b>	Approx. 68 g (0.15 lb.)
<b>Ingress Protection</b>	IP30 (under proper lens installation and wiring)
<b>Temperature</b>	Working temperature: 0 °C to 50 °C (32 °F to 122 °F) Storage temperature: -30 °C to 70 °C (-22 °F to 158 °F)
<b>Humidity</b>	20% to 80% without condensation
<b>General</b>	
<b>Client software</b>	MVS or third-party software meeting with GigE Vision Protocol
<b>Operation system</b>	32/64-bit Windows XP/7/10, 32/64-bit Linux and 64-bit MacOS
<b>Compatibility</b>	GigE Vision V2.0, GenICam
<b>Certifications</b>	CE, FCC, RoHS, KC