

MVGL-AC128-090GGM

1.3 MP 1/2" CMOS GigE Area Scan Camera



GEN*i*CAM

GIG*E*
VISION

Introduction

MVGL-AC128-090GGM camera adopts OnSemi PYTHON1300 sensor to provide high-quality image. It uses GigE interface to transmit non-compressed images in real time with max. frame rate reaching 90 fps in full resolution.

Key Feature

- Adopts GigE interface and max. transmission distance of 100 meters without relay.
- Supports auto and manual adjustment for exposure control, LUT, Gamma correction, etc.
- Up to 128 MB local memory for burst transmission.
- Supports hardware trigger, software trigger, etc.
- Compatible with GigE Vision V2.0 Protocol, GeniCam Standard, and third-party software based on the protocol and standard.

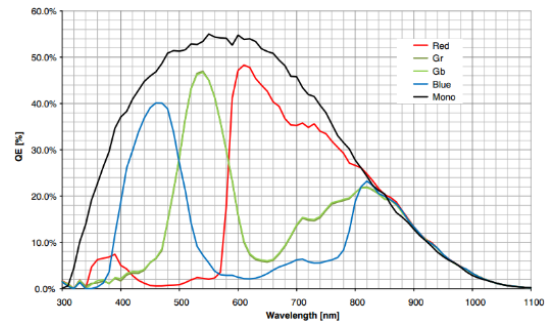
Available Model

MVGL-AC128-090GGM

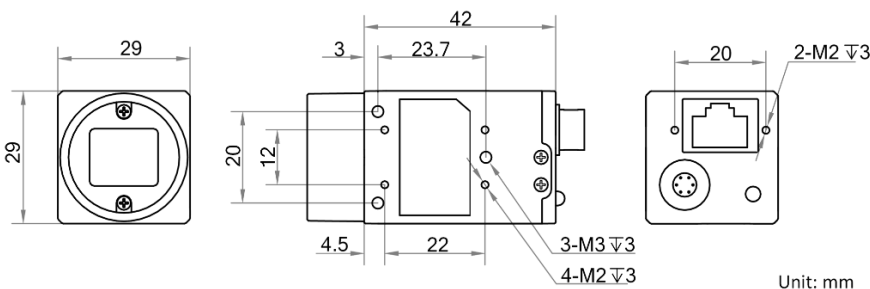
Applicable Industry

Electronic semiconductor, factory automation, food and beverage, medical packaging, etc.

Sensor Quantum Efficiency



Dimension



Specification

Model	MVGL-AC128-090GGM
Camera	
Sensor type	CMOS, global shutter
Sensor model	OnSemi PYTHON1300
Pixel size	4.8 μm x 4.8 μm
Sensor size	1/2"
Resolution	1280 x 1024
Max. frame rate	90 fps @1280 x 1024
Dynamic range	59.6 dB
SNR	39.8 dB
Gain	0 dB to 15 dB
Exposure time	38 μs to 10 s
Exposure mode	Off/Once/Continuous exposure mode
Mono/color	Mono
Pixel format	Mono 8/10/10p/12/12p
Binning	Supports 1 x 1, 1 x 2, 1 x 4, 2 x 1, 2 x 2, 2 x 4, 4 x 1, 4 x 2, 4 x 4
Decimation	Supports 1 x 1, 2 x 2
Reverse image	Supports horizontal and vertical reverse image output
Image buffer	128 MB
Electrical features	
Data interface	Gigabit Ethernet
Digital I/O	6-pin Hirose connector provides power supply and I/O, including opto-isolated Input x 1 (Line 0), opto-isolated Output x 1 (Line 1), and bi-directional non-isolated I/O x 1 (Line 2).
Power supply	12 VDC, supports PoE
Power consumption	Typ. 2.7 W@12 VDC
Structure	
Lens mount	C-Mount
Dimension	29 mm x 29 mm x 42 mm (1.1" x 1.1" x 1.7")
Weight	Approx. 68 g (0.15 lb.)
Ingress protection	IP30 (under proper lens installation and wiring)
Temperature	Working temperature: 0 $^{\circ}\text{C}$ to 50 $^{\circ}\text{C}$ (32 $^{\circ}\text{F}$ to 122 $^{\circ}\text{F}$) Storage temperature: -30 $^{\circ}\text{C}$ to 70 $^{\circ}\text{C}$ (-22 $^{\circ}\text{F}$ to 158 $^{\circ}\text{F}$)
Humidity	20% to 80% RH, non-condensing
General	
Client software	MVS or third-party software meeting with GigE Vision Protocol
Operation system	32/64-bit Windows XP/7/10, 32/64-bit Linux and 64-bit MacOS
Compatibility	GigE Vision V2.0, GenICam
Certifications	CE, FCC, RoHS, KC