

MVGL-AC384-011RGM

10 MP 1/2.3" CMOS GigE Area Scan Camera



GEN*i*CAM

GigE
VISION

Introduction

MVGL-AC384-011RGM adopts MT9J003 sensor and GigE interface to provide high-quality image and non-compressed images in real time. Its max. frame rate reaches up to 11.2 fps in full resolution.

Key Feature

- Adopts GigE interface and max. transmission distance of 100 meters without relay.
- Supports auto and manual adjustment for exposure control, LUT, Gamma correction, etc.
- Up to 128 MB local memory for burst transmission.
- Supports hardware trigger, software trigger, etc.
- Compatible with GigE Vision Protocol, GenICam Standard, and third-party software based on the protocol and standard.

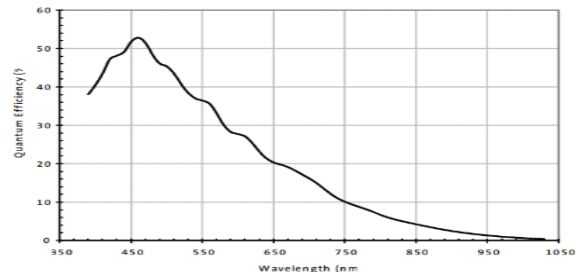
Available Model

MVGL-AC384-011RGM

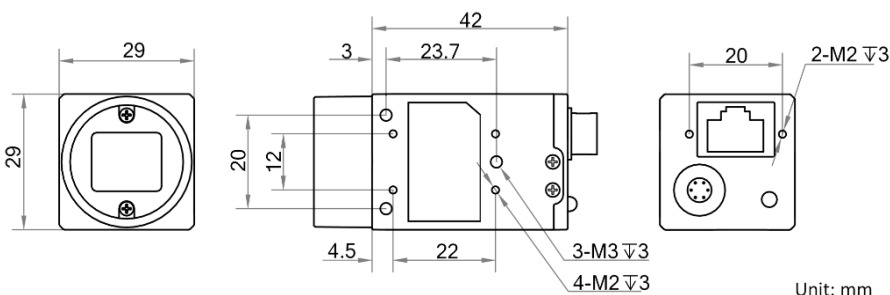
Applicable Industry

Electronic semiconductor, factory automation, food and beverage, medical packaging, etc.

Sensor Quantum Efficiency



Dimension



Specification

Model	MVGL-AC384-011RGM
Camera	
Sensor type	CMOS, rolling shutter
Sensor model	Aptina MT9J003
Pixel size	1.67 μm \times 1.67 μm
Sensor size	1/2.3"
Resolution	3840 \times 2748
Max. frame rate	11.2 fps @3840 \times 2748
Dynamic range	65 dB
SNR	34 dB
Gain	0 dB to 15.3 dB
Exposure time	26 μs to 1 s
Exposure mode	Off/Once/Continuous exposure mode
Mono/color	Mono
Pixel format	Mono 8/10/10p/12/12p
Binning	Supports 1 \times 1, 2 \times 2
Decimation	Not support
Reverse image	Supports horizontal reverse image output
Image buffer	128 MB
Electrical features	
Data interface	Gigabit Ethernet
Digital I/O	6-pin Hirose connector provides power supply and I/O, including opto-isolated Input \times 1 (Line 0), opto-isolated Output \times 1 (Line 1), and bi-directional non-isolated I/O \times 1 (Line 2).
Power supply	12 VDC, supports PoE
Power consumption	Typ. 2.6 W@12 VDC
Structure	
Lens mount	C-Mount
Dimension	29 mm \times 29 mm \times 42 mm (1.1" \times 1.1" \times 1.7")
Weight	Approx. 68 g (0.15 lb.)
Ingress protection	IP30 (under proper lens installation and wiring)
Temperature	Working temperature: 0 $^{\circ}\text{C}$ to 50 $^{\circ}\text{C}$ (32 $^{\circ}\text{F}$ to 122 $^{\circ}\text{F}$) Storage temperature: -30 $^{\circ}\text{C}$ to 70 $^{\circ}\text{C}$ (-22 $^{\circ}\text{F}$ to 158 $^{\circ}\text{F}$)
Humidity	20% to 80% RH, non-condensing
General	
Client software	MVS or third-party software meeting with GigE Vision Protocol
Operating system	32/64-bit Windows XP/7/10, 32/64-bit Linux and 64-bit MacOS
Compatibility	GigE Vision V1.2, GenICam
Certification	CE, FCC, RoHS, KC