

MVGL-AC547-006RGM

20 MP 1" CMOS GigE Area Scan Camera



GEN*i*CAM

GIG*E*
VISION

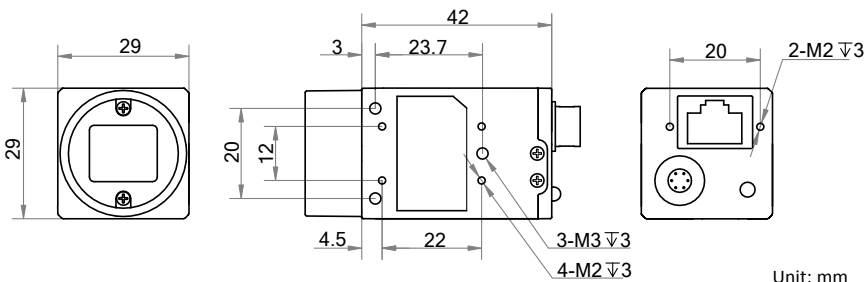
Introduction

MVGL-AC547-006RGM camera adopts Sony® IMX183 sensor to provide high-quality image. It uses GigE interface to transmit non-compressed images in real time with max. frame rate reaching 5.9 fps in full resolution.

Key Feature

- Adopts GigE interface and max. transmission distance of 100 meters without relay.
- Supports auto and manual adjustment for exposure control, LUT, Gamma correction, etc.
- Up to 128 MB local memory for burst transmission.
- Supports hardware trigger, software trigger, etc.
- Compatible with GigE Vision V2.0 Protocol, GeniCam Standard, and third-party software based on the protocol and standard.

Dimension



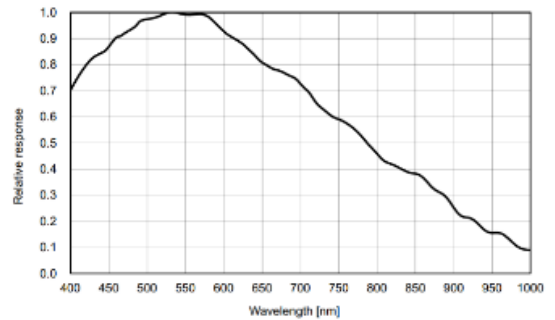
Available Model

MVGL-AC547-006RGM

Applicable Industry

Electronic semiconductor, factory automation, food and beverage, medical packaging, etc.

Sensor Quantum Efficiency



Specification

Model	MVGL-AC547-006RGM
Camera	
Sensor type	CMOS, rolling shutter
Sensor model	Sony® IMX183
Pixel size	2.4 μm × 2.4 μm
Sensor size	1"
Resolution	5472 × 3648
Max. frame rate	5.9 fps @5472 × 3648
Dynamic range	65.5 dB
SNR	41.5 dB
Gain	0 dB to 20 dB
Exposure time	46 μs to 2.5 s
Exposure mode	Off/Once/Continuous exposure mode, supports Global Reset
Mono/color	Mono
Pixel format	Mono 8/10/10p/12/12p
Binning	Supports 1 × 1, 1 × 2, 1 × 4, 2 × 1, 2 × 2, 2 × 4, 4 × 1, 4 × 2, 4 × 4
Decimation	Not support
Reverse image	Supports horizontal and vertical reverse image output
Image buffer	128 MB
Electrical features	
Data interface	Gigabit Ethernet
Digital I/O	6-pin Hirose connector provides power supply and I/O, including opto-isolated Input × 1 (Line 0), opto-isolated Output × 1 (Line 1), and bi-directional non-isolated I/O × 1 (Line 2).
Power supply	9 VDC to 24 VDC, supports PoE
Power consumption	Typ. 2.9 W@12 VDC
Structure	
Lens mount	C-Mount
Dimension	29 mm × 29 mm × 42 mm (1.1" × 1.1" × 1.7")
Weight	Approx. 68 g (0.15 lb.)
Ingress protection	IP30 (under proper lens installation and wiring)
Temperature	Working temperature: 0 °C to 50 °C (32 °F to 122 °F) Storage temperature: -30 °C to 70 °C (-22 °F to 158 °F)
Humidity	20% to 80% RH, non-condensing
General	
Client software	MVS or third-party software meeting with GigE Vision Protocol
Operating system	32/64-bit Windows XP/7/10, 32/64-bit Linux and 64-bit MacOS
Compatibility	GigE Vision V2.0, GenICam
Certification	CE, FCC, RoHS, KC