

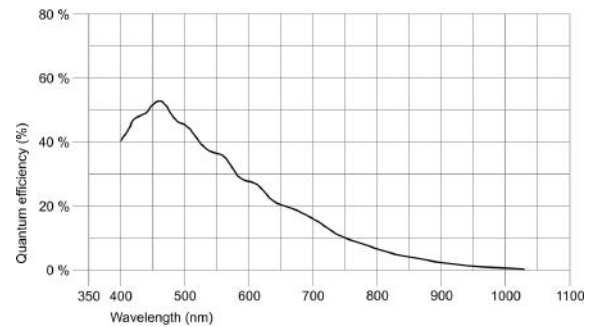
UI-1490LE-M-GL (AB.0010.1.52200.23)



## Specification

### Sensor

Sensor type	CMOS Mono
Shutter	Rolling shutter
Sensor characteristic	Linear
Readout mode	Progressive scan
Pixel Class	UHD+
Resolution	10.55 Mpix
Resolution (h x v)	3840 x 2748 Pixel
Aspect ratio	4:3
ADC	12 bit
Color depth (camera)	8 bit
Optical sensor class	1/2"
Optical Size	6.413 mm x 4.589 mm
Optical sensor diagonal	7.89 mm (1/2.03")
Pixel size	1.67 µm
Manufacturer	ON Semiconductor
Sensor Model	MT9J003STM
Gain (master/RGB)	8.5x/-
AOI horizontal	increased frame rate
AOI vertical	increased frame rate
AOI image width / step width	448 / 4
AOI image height / step width	4 / 2
AOI position grid (horizontal/vertical)	4 / 2
Binning horizontal	increased frame rate
Binning vertical	increased frame rate
Binning method	Color
Binning factor	2
Subsampling horizontal	increased frame rate
Subsampling vertical	increased frame rate
Subsampling method	Color
Subsampling factor	2, 4



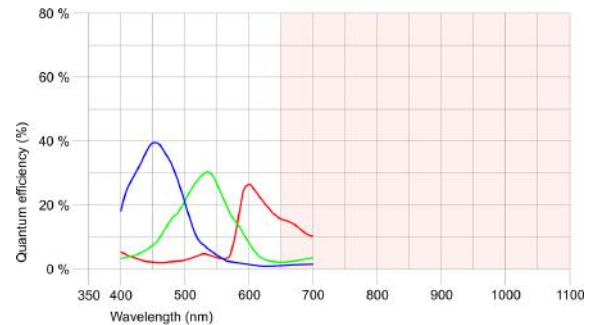
UI-1490LE-C-HQ (AB.0010.1.45300.24)



## Specification

### Sensor

Sensor type	CMOS Color
Shutter	Rolling shutter
Sensor characteristic	Linear
Readout mode	Progressive scan
Pixel Class	UHD+
Resolution	10.55 Mpix
Resolution (h x v)	3840 x 2748 Pixel
Aspect ratio	4:3
ADC	12 bit
Color depth (camera)	8 bit
Optical sensor class	1/2"
Optical Size	6.413 mm x 4.589 mm
Optical sensor diagonal	7.89 mm (1/2.03")
Pixel size	1.67 µm
Manufacturer	ON Semiconductor
Sensor Model	MT9J003STC
Gain (master/RGB)	8.5x/5.3x
AOI horizontal	increased frame rate
AOI vertical	increased frame rate
AOI image width / step width	448 / 4
AOI image height / step width	4 / 2
AOI position grid (horizontal/vertical)	4 / 2
Binning horizontal	increased frame rate
Binning vertical	increased frame rate
Binning method	Color
Binning factor	2 / 4
Subsampling horizontal	increased frame rate
Subsampling vertical	increased frame rate
Subsampling method	Color
Subsampling factor	2, 4



## UI-1490LE-M/C

### Model

Pixel clock range	5 MHz - 36 MHz
Frame rate freerun mode	3.2 fps
Frame rate trigger (maximum)	3.2 fps
Exposure time (minimum - maximum)	0.340 ms - 14582 ms
Power consumption	0.5 W - 1.3 W

### Ambient conditions

The temperature values given below refer to the outer device temperature of the camera housing.

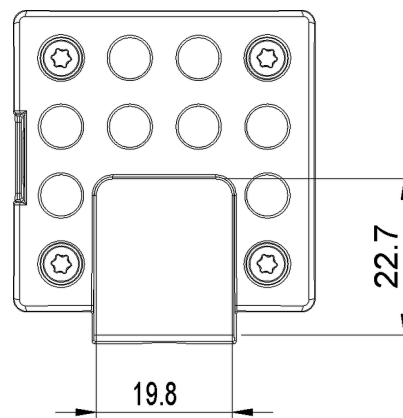
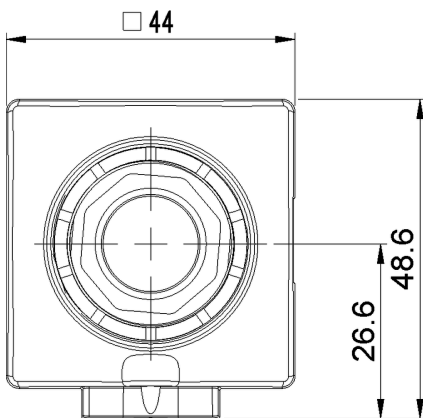
Device temperature during operation	0 °C - 55 °C / 32 °F - 131 °F
Device temperature during storage	-20 °C - 80 °C / -4 °F - 176 °F
Humidity (relative, non-condensing)	20 % - 80 %

### Connectors

Interface connector	USB 2.0 mini-B
I/O connector	-
Power supply	USB cable

### Design

Lens Mount	CS- / C-Mount
IP code	IP30
Dimensions H/W/L	48.6 mm x 44.0 mm x 25.6 mm
Mass	41 g



## UI-1490LE-M/C

